



# THE BELFAST EMPIRE

## **ARTIST TOUR CONTACT**

Stephen Bradley | General Manager  
info@thebelfastempire.com  
+44 (0)7957 544317

## **VENUE PRODUCTION CONTACT**

Damien Kyle | House Engineer  
dee.kyle@hotmail.com

## **VENUE / PROMOTER SHOW DAY CONTACT**

Stephen Bradley | General Manager  
info@thebelfastempire.com

THE BELFAST EMPIRE MUSIC HALL  
42 Botanic Avenue | Belfast | County Antrim | BT7 1JQ  
+44 (0)28 9024 9276 [www.thebelfastempire.com](http://www.thebelfastempire.com)

## LOCATION



## PARKING

Artist vehicles usually park to side of venue on Cameron Street. This is metered parking, which can be problematic for day time arrivals. On request (min. 2 weeks prior) parking bays can be suspended for tour vehicles arriving during the day or previous night.

An abundance of on-street\* parking is available in the surrounding area also.

\*Metered: Mon - Sat 08.00-18.00, £0.30 per 15 minutes

## AMENITIES

### BUS POWER

With prior notice Shore Power sockets to side of venue, at stage door, can be activated.

### ACCESS

Backstage access for artists and loading is via the unmarked, green, double-door to Cameron Street. Main Doors are to the front of the venue on Botanic Avenue.

### LOADING

Via backstage access, it is 15-18 internal steps, with a turn, to venue on upper floor. There is a small goods lift for heavy items. Very large items can be brought in via main doors.

### MERCHANDISE

No fees charged. On request, venue can supply table. Dependent upon attendance, merch stall can be set up in entrance lobby -a small but well-lit area or inside main room to right of entrance -a small but darker area.  
Local staff call £50ph (min. 1 week prior)

### DRESSING ROOM

There are x2 very small dressing rooms backstage, one with adjacent wc. There is an overflow space outside one of these to take slack for larger parties, please note this is primarily a large bar / furniture store.

### PRODUCTION OFFICE

No specific space.

### BOX OFFICE PERSONNEL

| For venue hire only  
Local staff call £50ph (min. of 1 week prior)

### WI-FI

Network: empire | Code: olympics

### SHOWER

No shower at venue.

### LAUNDRY

GLOBE CLEANERS day time launderette less than 100 metres from venue on Botanic Avenue

### NEAREST ATM

Outside SPAR shop, less than 100 metres from venue on Botanic Avenue

### TAXIS

VALUE CABS 028 9080 9080 | FON A CAB 028 9023 3333 | UBER

### LOCAL INFO

An extensive guide to Belfast for visitors [www.gotobelfast.com](http://www.gotobelfast.com)  
Northern Ireland Tourism info [www.discovernorthernireland.com](http://www.discovernorthernireland.com)

### LOCAL AMENITIES

Lively Botanic Avenue links the leafy suburbs of South Belfast and the Queens Quarter to the bustling Shaftesbury Square and Dublin Road. There are lots of great places for coffee, drinks and dining nearby. Plus for any culture vultures the Ulster Museum and Botanic Gardens as well as the stunning Queens University are all within easy walking distance.

### AIRPORTS

BFS - BELFAST INTERNATIONAL AIRPORT 16 miles Allow 1hr min.

BHD - BELFAST CITY AIRPORT 4 miles Allow 30minutes min.

### ACCOMMODATION

#### HOTELS

The Crescent Townhouse Hotel, Lower Crescent (3★)

Dukes Hotel, University Street (4★)

Ibis, University Street (3★)

Etap, Dublin Road (2★)

Tara Lodge, Cromwell Road (4★)

Benedicts Hotel, Bradbury Place (4★)

Holiday Inn, Queens Quarter, University Street (3★)

Malone Lodge Hotel, Eglantine Avenue (4★)\*\*

Wellington Park Hotel, Malone Road (4★)

\*\*Preferential rates available

#### B&Bs

Botanic Rest, Cromwell Road

Kates, University Street

Harpers Boutique, University Street

Pearl Court, Malone Road

### CAPACITY

Max. Capacity: 500

Recommended Capacity: 480 + Guests

Full Cabaret Layout Capacity: 300

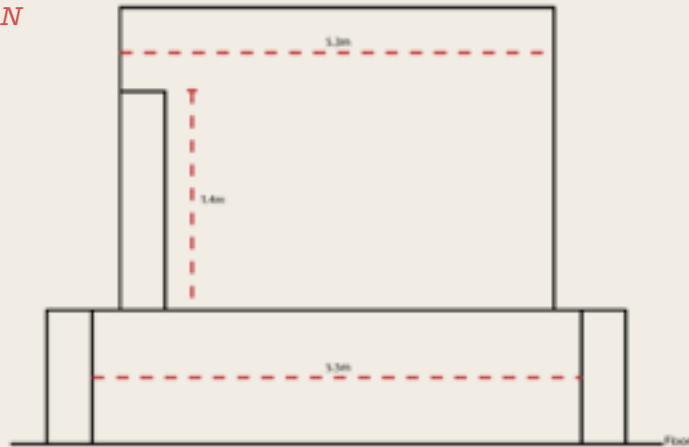
All seating in The Empire Music Hall is LIMITED and UNRESERVED

## TECHNICAL SPECIFICATIONS

Aspects of the following spec are subject to change and can also be adapted to suit individual production requirements

### STAGE

#### PLAN



- 5.70 METRES WIDE AT FRONT LINE
- 5.30 METRES WIDE AT BACK LINE
- 5.40 METRES FROM FRONT TO BACK AT CENTRE
- 1.03 METRES HIGH

Stage is narrower, and clearance significantly lower, at back as rear half of stage is set into wall between supporting pillars and beams

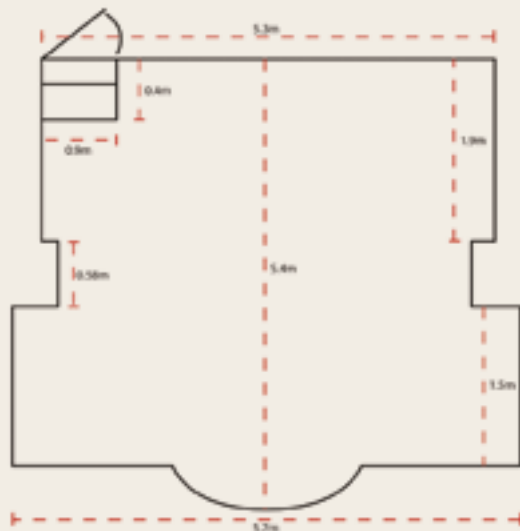
CLEARANCE FRONT 6.6 METRES

CLEARANCE REAR 2.5 METRES

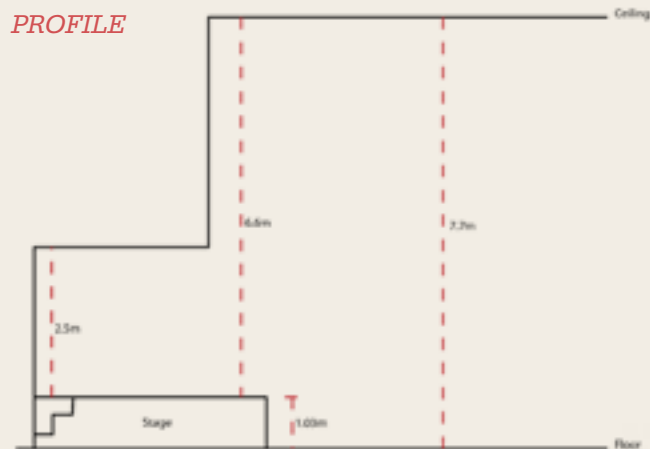
On-stage door is at stage right rear

2 x Dressing Rooms, separate WC and storage are contained within backstage

#### ELEVATION



#### PROFILE





## AUDIO

*MAINS* | L-Acoustics Arcs WiFo

2 Flown SB18's

4 Flown Arcs Focus

2 Flown Arcs Wide

2 SB28's under stage

## AMPLIFICATION

1 L-Acoustics LA8 amplified controller SB28's - mono aux send

2 output channels

2 LA4XCE amplified controller - SB 18's/ Arcs Wide and Focus

## MONITORS

6 Bi-amped mixes available

Chevin and QSC amplification

2 BSS Omnidrives

6 Martin LE 1500 wedges

2 Martin LE 400 wedges

1 DAS Audio 18A powered drum sub

1 DAS Audio 12A powered drum mid/hi

## FOH DESK | Midas Pro2C Gen III

5 Cat6 cables from/ to Midas DL251 stage

1 Cat6 cable to Network Manager from FOH

48 Lines available from Midas DL251 stagebox.

16 Outputs from DL251 stagebox

8 Local inputs on desk

8 Local outputs on desk

40ch. Analogue multicore available

2 Pioneer CDJ 1000 MK III

1 A&H xOne 62 DJ mixer at mix position

Comprehensive assortment of Shure/ Sennheiser/  
AKG industry standard microphones

**UNLESS MONITOR CONSOLE CAN FIT ON STAGE, ALL MONITORING TO  
BE CONTROLLED FROM F.O.H. DUE TO H&S LEGISLATION PREVENTING  
BLOCKAGE OF EMERGENCY EXITS**

**THE VENUE DOES NOT SUPPLY SPLITTER BOXES / MULTI-CORES FOR  
MULTI-TRACK RECORDING / MONITOR CONSOLES**

**WE DO NOT CARRY IN-EAR MONITORS, RADIO MICROPHONES OR  
HEADSETS, HOWEVER ON REQUEST (MIN. 2 WEEKS PRIOR) WE CAN  
ARRANGE FOR HIRE\*\*\***

**\*\*\*HIRE COSTS MAY INCUR ADDITIONAL FEES**



## LIGHTING

### ON-STAGE BACKLIGHTS

- 3 Chauvet spot LED 350
- 2 White par cans
- 2 LED floods
- 2 Blinders

### TRUSS CENTRE HALL | Permanently fixed

- 4 Chauvet spot LED 350
- 4 Chauvet spot LED 450
- 4 Chauvet Q Wash 419Z
- 14 Par Cans

### ALL LIGHTING CONTROLLED AT FOH BY MARTIN MPC

### WE DO NOT CARRY AVOLITE OR SIMILAR DESK

